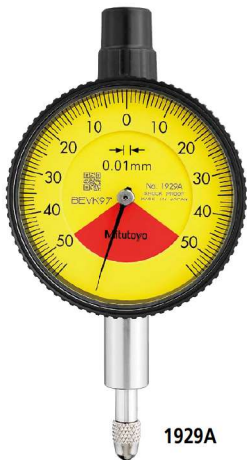


Dial Indicators

SERIES 1 — Compact One Revolution Type for Error-free Reading

- The one revolution dial indicator (compact type) prevents the possibility of reading errors.
- Mitutoyo's unique shock-proof mechanism is incorporated, providing improved resistance to shock due to sudden spindle retraction caused by impact.
- The indicator is highly durable thanks to its oil- and water-tight design, quenched hardened stainless-steel, carbide contact point, and a grand gear made of wear- and deformation-resistant material.
- Application of an anti-reflective and hard surface coating improves scale visibility along with scratch and chemical resistance.
- The dead zone in red indicates "accuracy not guaranteed".



1929A



One revolution type Back Plunger dial gages are also available. (Refer to pages 07-59 to 07-62 for details.)



2990A-10

SPECIFICATIONS

Metric		<div><div></div> ISO/JIS type <div></div> ANSI/AGD type</div>									
Code No.		Graduation (mm)	Range (range/rev) (mm)	Maximum permissible error (MPE) (μm)						Dial reading	Measuring force (N)
w/lug	Flat-back			Indication error				Hysteresis	Repeat-ability		
				1/10 Rev	1/2 Rev	1 Rev	Measuring range				
1929A	1929AB	0.01	1 (1.4)	7	—	—	11	4	3	50-0-50	1.4 or less
1929A-62	1929AB-62	0.01	1 (1.4)	7	—	—	11	4	3	50-0-50	1.4 or less
1900A-10	1900AB-10	0.001	0.1 (0.14)	2.5	—	—	5	2	1	50-0-50	1.5 or less
1900A-72	1900AB-72	0.001	0.1 (0.14)	2.5	—	—	5	2	1	50-0-50	1.5 or less

Inch											
Code No.		Graduation (in)	Range (range/rev) (in)	Accuracy (in)				Repeat-ability (in)	Dial reading	Measuring force (N)	
w/lug	Flat-back			First 1 Rev/2.5 Rev/10 Rev		Retrace					
1909A-62	1909AB-62	0.0005	0.04 (0.056)	±0.0005 /— /—		0.00016	±0.0001	20-0-20	1.4 or less		
1910A-72	1910AB-72	0.0001	0.006 (0.008)	±0.0001 /— /—		0.0001	±0.00003	3-0-3	1.5 or less		

Note: Completed products inspection is performed in the vertical orientation (contact point downward) and the stated accuracy is guaranteed.

DIMENSIONS

ISO/JIS Type

Unit: mm

ANSI/AGD Type

Unit: in

Metric										
Code No.	A	B	C	D	E	F	G	H	I	Mass (g)
	w/lug	Flat-back								
1929A	32.5	47.5	40	15	20	13.8	13.7	38	6.6	90
1929A-62	32.5	47.5	40	15	20	13.8	13.7	38	6.6	90
1900A-10	32.5	53.5	40	15	20	13.8	19.7	38	6.6	95
1900A-72	32.5	53.5	40	15	20	13.8	19.7	38	6.6	95

Inch										
Code No.	A	B	C	D	E	F	G	H	I	Mass (g)
	w/lug	Flat-back								
1909A-62	1.28	1.64	1.57	0.59	0.75	0.50	0.35	1.50	0.26	90
1910A-72	1.28	1.61	1.57	0.59	0.75	0.50	0.31	1.50	0.26	90

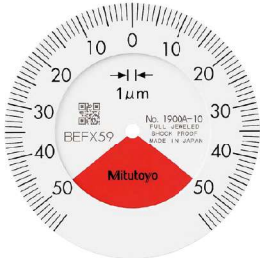
Note: Refer to pages 07-63 to 07-68 for details of contact points.

Optional Accessories

- Limit hand (2 pcs.), Bezel clamp
- Refer to page 07-49 for details.



Balanced scale



Graduation: 0.001 mm,
Measuring range: 0.1 mm

1900A-10

One revolution

Shockproof

Jeweled bearing

1900A-72

One revolution

Shockproof

Dustproof

Jeweled bearing



Balanced scale



Graduation: 0.01 mm,
Measuring range: 1 mm

1929A

One revolution

Shockproof

1929A-62

One revolution

Shockproof

Dustproof

FEATURES

Metric		ISO/JIS type		ANSI/AGD type	
Code No.					
w/lug	Flat-back	One revolution	Shockproof	Jeweled bearing	Dustproof
1929A	1929AB	✓	✓		✓
1929A-62	1929AB-62	✓	✓		✓
1900A-10	1900AB-10	✓	✓	✓	✓
1900A-72	1900AB-72	✓	✓	✓	✓

Inch					
Code No.					
w/lug	Flat-back	One revolution	Shockproof	Jeweled bearing	Dustproof
1909A-62	1909AB-62	✓	✓		✓
1910A-72	1910AB-72	✓	✓	✓	✓